

Supplier's Product Code :  
 Product Added :  
 Last Updated by Supplier :  
 erudus id :

P1440B  
 08 April 2022  
 10 March 2023  
 c93f9627aa5e47b2b56e9d8438e0d36c



The information on the **Erudus System** has been supplied by the manufacturers of the products and, whilst the owners of the Erudus System take steps to ensure the information is regularly updated, they give no warranty and no guarantee that the information is accurate. Product information and ingredients may change, please always read product labels carefully in addition to using the information provided by Erudus One.

We do not accept liability for any inaccuracies or incorrect information contained on this site. Please visit <http://www.erudus.com/terms-and-conditions> for full terms and conditions.

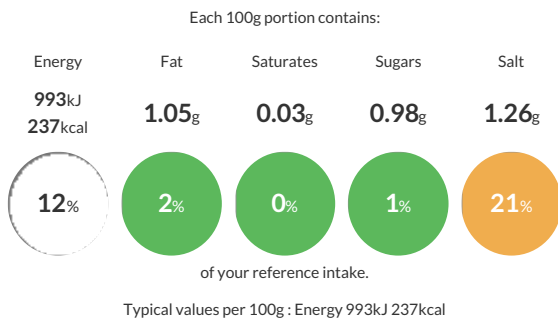
## PP Country 400g

Short Product Name:  
 PP Country 400g

Small round loaf with a cross hatch of scoring. Slightly open structure with a beige colour and a brown baked crust. Fresh baked taste with the taste of rye and a slightly sour note at the end. Pack of 1. Home compostable film.

Traded Unit GTIN:  Internal GTIN:  5060697740059 Supplier:  The Artisan Bakery Suppliers Product Code:  P1440B

### Reference Intake



### Nutritional Information

Typical Values	Per 100g
Energy	993kJ 237kCal
Carbohydrates	47.3g
of which sugars	0.98g
Fat	1.05g
of which saturates	0.03g
Fibre	2.96g
Protein	8.86g
Salt	1.26g

### Allergy Information

Key:  Contains  May Contain



### Dietary Information

Key:  Suitable for



#### Allergen Statement

Manufactured in a factory that handles Nuts, Sesame, Milk, Eggs, Barley, Oats, Spelt, Soya, Mustard. 'Suitable for Vegans' is based on ingredients list and does not take into account possible cross contamination during production.

### Ingredients

Strong **WHEAT** Flour (48%) [**WHEAT** Flour, Calcium Carbonate, Niacin, Iron, Thiamine], Water, Fermented **WHEAT** Flour (20%), Wholemeal **RYE** Flour, Wholemeal **WHEAT** Flour (3%) [**WHEAT**], Salt; Fermented **WHEAT** Flour contains: Strong **WHEAT** Flour (63%) [**WHEAT** Flour, Calcium Carbonate, Niacin, Iron, Thiamine], Water.