

Supplier's Product Code :
 Product Added :
 Last Updated by Supplier :
 erudus id :

D1301A
 05 January 2024
 05 January 2024
 b10dc62c2b1b4a2a8c4a57975e5a94dc



The information on the **Erudus System** has been supplied by the manufacturers of the products and, whilst the owners of the Erudus System take steps to ensure the information is regularly updated, they give no warranty and no guarantee that the information is accurate. Product information and ingredients may change, please always read product labels carefully in addition to using the information provided by Erudus One.

We do not accept liability for any inaccuracies or incorrect information contained on this site. Please visit <http://www.erudus.com/terms-and-conditions> for full terms and conditions.

600g Country Sourdough Bloomer

Short Product Name:

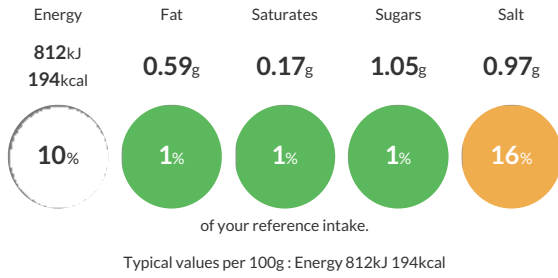
600g Country Sourdough Bloomer

600g Country Sourdough Bloomer

Traded Unit GTIN: Internal GTIN: Supplier: **The Artisan Bakery** Suppliers Product Code: **D1301A**

Reference Intake

Each 100g portion contains:



Nutritional Information

Typical Values	Per 100g
Energy	812kJ 194kCal
Carbohydrates	41.09g
of which sugars	1.05g
Fat	0.59g
of which saturates	0.17g
Fibre	2.54g
Protein	7.16g
Salt	0.97g

Allergy Information

Key: **Contains** **May Contain**

Contains Cereal/Gluten	May Contain Milk	May Contain Eggs	Does Not Contain Peanuts	May Contain Nuts	Does Not Contain Crustaceans	May Contain Mustard
Does Not Contain Fish	Does Not Contain Lupin	May Contain Sesame	Does Not Contain Celery	May Contain Soya	Does Not Contain Molluscs	Does Not Contain Sulphur Dioxide

Dietary Information

Key: **Suitable for**

Suitable for Vegetarian	Suitable for Vegan	May not be suitable for Kosher	May not be suitable for Halal	May not be suitable for Coeliac
-------------------------	--------------------	--------------------------------	-------------------------------	---------------------------------

Allergen Statement

Manufactured in a factory that handles Almonds, Hazelnuts, Walnuts, Pecan Nuts, Pistachios, Sesame, Milk, Eggs, Barley, Oats, Spelt, Soya, Mustard.

'Suitable for Vegans' is based on ingredients list and does not take into account possible cross contamination during production.

Ingredients

Flour **[WHEAT** Flour, Calcium, Iron, Niacin, Thiamin], Water, Country Bread Flour **[WHEAT** Flour, Deactivated and Dehydrated **RYE** Sourdough, **RYE** Flour, **WHEAT GLUTEN**, Malted **WHEAT** Flour, Calcium Carbonate, Nicotinamide, Iron, Thiamin, Flour Treatment Agent (E300), Wholemeal **WHEAT** Flour, **RYE** Flour, Salt.