

Supplier's Product Code :
 Product Added :
 Last Updated by Supplier :
 erudus id :

P7452
 11 April 2022
 17 April 2023
 2c2b6835e32e4185b63911bad2836cc1



The information on the **Erudus System** has been supplied by the manufacturers of the products and, whilst the owners of the Erudus System take steps to ensure the information is regularly updated, they give no warranty and no guarantee that the information is accurate. Product information and ingredients may change, please always read product labels carefully in addition to using the information provided by Erudus One.

We do not accept liability for any inaccuracies or incorrect information contained on this site. Please visit <http://www.erudus.com/terms-and-conditions> for full terms and conditions.

PP Plant Based Chocolate Muffin (Tray)

Short Product Name:

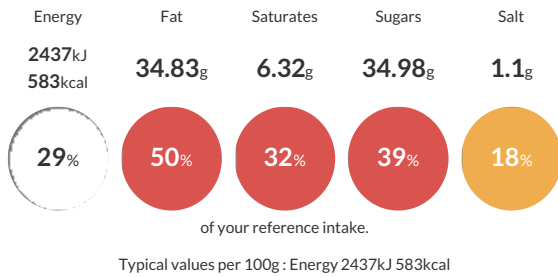
PP Plant Based Chocolate Muffin (Tray)

PP Plant Based Chocolate Muffin (Tray)

Traded Unit GTIN: - Internal GTIN: **5060697740721** Supplier: **The Artisan Bakery** Suppliers Product Code: **P7452**

Reference Intake

Each 100g portion contains:



Nutritional Information

Typical Values	Per 100g
Energy	2437kJ 583kCal
Carbohydrates	56.47g
of which sugars	34.98g
Fat	34.83g
of which saturates	6.32g
Fibre	4.45g
Protein	8.89g
Salt	1.1g

Allergy Information

Key: **Contains** **May Contain**

Contains Cereal/Gluten	May Contain Milk	May Contain Eggs	Does Not Contain Peanuts	May Contain Nuts	Does Not Contain Crustaceans	May Contain Mustard
Does Not Contain Fish	Does Not Contain Lupin	May Contain Sesame	Does Not Contain Celery	Contains Soya	Does Not Contain Molluscs	Does Not Contain Sulphur Dioxide

Dietary Information

Key: **Suitable for**

Suitable for Vegetarian	Suitable for Vegan	May not be suitable for Kosher	May not be suitable for Halal	May not be suitable for Coeliac
-------------------------	--------------------	--------------------------------	-------------------------------	---------------------------------

Allergen Statement

Manufactured in a factory that handles Nuts, Sesame, Milk, Eggs, Rye, Barley, Oats, Spelt, Mustard. 'Suitable for Vegans' is based on ingredients list and does not take into account possible cross contamination during production.

Ingredients

Vegan Cake Mix [Sugar, **WHEAT** Flour, **WHEAT** Starch, **SOYA** Protein Concentrate, Raising Agents: E 450, E 500, Dextrose, Salt, Thickener E 415, Natural Vanilla Flavouring, Spice], Rapeseed Oil, Water, Dark Chocolate (19%) [Cocoa Mass, Sugar, Cocoa butter, **SOYA** Lecithin, Natural Vanilla Flavour], Cocoa Powder, Icing Sugar [Sugar, Anti Caking Agent (E341)].