

Supplier's Product Code :
Product Added :
Last Updated by Supplier :
erudus id :

P6540
11 April 2022
11 April 2022
45b35e5e196244e7a7e1c16601ede21b



The information on the Erudus System has been supplied by the manufacturers of the products and, whilst the owners of the Erudus System take steps to ensure the information is regularly updated, they give no warranty and no guarantee that the information is accurate. Product information and ingredients may change, please always read product labels carefully in addition to using the information provided by Erudus One.

We do not accept liability for any inaccuracies or incorrect information contained on this site. Please visit <http://www.erudus.com/terms-and-conditions> for full terms and conditions.

PP Muffin Chocolate (Tray)

Short Product Name:

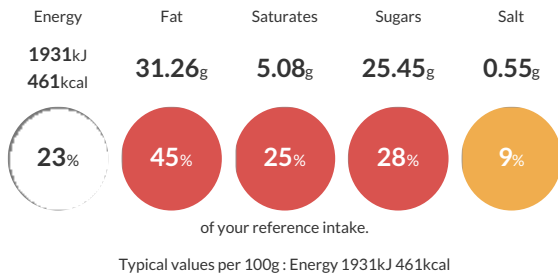
PP Muffin Chocolate (Tray)

PP Muffin Chocolate (Tray)

Traded Unit GTIN: - Internal GTIN: 5060697740103 Supplier: The Artisan Bakery Suppliers Product Code: P6540

Reference Intake

Each 100g portion contains:



Nutritional Information

Typical Values	Per 100g
Energy	1931kJ 461kCal
Carbohydrates	39.45g
of which sugars	25.45g
Fat	31.26g
of which saturates	5.08g
Fibre	2.4g
Protein	5.02g
Salt	0.55g

Allergy Information

Key: Contains May Contain



Dietary Information

Key: Suitable for



Allergen Statement

Manufactured in a factory that handles Nuts, Sesame, Rye, Barley, Oats, Spelt, Mustard.

Ingredients

Rapeseed Oil, Caster Sugar, **WHEAT** Flour (with added Calcium, Iron, Niacin, Thiamin), Free Range Pasteurised Whole **EGG** (14%), Dark Chocolate (12%) [Cocoa Mass, Sugar, Cocoa Butter, **SOYA** Lecithin, Natural Vanilla Flavour], Pasteurised Whole **MILK**, Cocoa Powder, Baking Powder [Raising Agents: (E500(ii), E450(i)), **WHEAT** Flour (contains Calcium, Iron, Niacin, Thiamin)], Salt.