

Supplier's Product Code :  
Product Added :  
Last Updated by Supplier :  
erudus id :

P2440B  
08 April 2022  
07 April 2023  
2f72269f182a447a8a45597fed3814fb



The information on the Erudus System has been supplied by the manufacturers of the products and, whilst the owners of the Erudus System take steps to ensure the information is regularly updated, they give no warranty and no guarantee that the information is accurate. Product information and ingredients may change, please always read product labels carefully in addition to using the information provided by Erudus One.

We do not accept liability for any inaccuracies or incorrect information contained on this site. Please visit <http://www.erudus.com/terms-and-conditions> for full terms and conditions.

## PP Olive Bread 400g

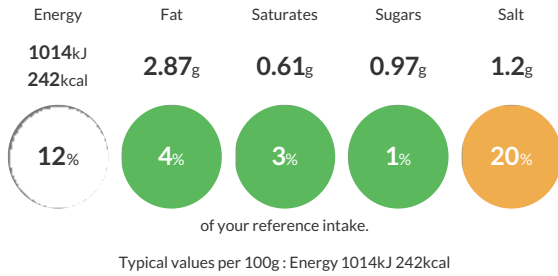
Short Product Name:  
PP Olive Bread 400g

Ovoid with slightly pointed ends. Floured top with rye flour. Five diagonal cuts on each side. Brown baked crust. Closed structure with a grey/beige colour and flecks of chopped black olives. Fresh baked taste with black olives, rye and a back note of parmesan. Slightly yeasty finish with a sour end note. Pack of 1 unit. Home compostable film.

Traded Unit GTIN: Internal GTIN: 5060697740066 Supplier: The Artisan Bakery Suppliers Product Code: P2440B

### Reference Intake

Each 100g portion contains:



### Nutritional Information

Typical Values	Per 100g
Energy	1014kJ 242kCal
Carbohydrates	44.71g
of which sugars	0.97g
Fat	2.87g
of which saturates	0.61g
Fibre	3.54g
Protein	8.57g
Salt	1.2g

### Allergy Information

Key: Contains May Contain



#### Allergen Statement

Manufactured in a factory that handles Nuts, Sesame, Rye, Barley, Oats, Spelt, Soya

### Ingredients

Strong WHEAT Flour (51%) [WHEAT Flour, Calcium Carbonate, Niacin, Iron, Thiamine], Water, Wholemeal RYE Flour, Black Olive (7%) [Olives, Water, Salt, Colour Stabiliser (E579)], Grated Grana Padano [Unpasteurised Cow's MILK, Salt, Animal Rennet, Lysozyme (EGG - E1105 Preservative)], Salt, Fresh Yeast.

### Dietary Information

Key: Suitable for

