

Supplier's Product Code :
 Product Added :
 Last Updated by Supplier :
 erudus id :

P7704
 12 April 2022
 17 April 2023
 368d33783a704e568701a41b3453adad



The information on the **Erudus System** has been supplied by the manufacturers of the products and, whilst the owners of the Erudus System take steps to ensure the information is regularly updated, they give no warranty and no guarantee that the information is accurate. Product information and ingredients may change, please always read product labels carefully in addition to using the information provided by Erudus One.

We do not accept liability for any inaccuracies or incorrect information contained on this site. Please visit <http://www.erudus.com/terms-and-conditions> for full terms and conditions.

PP 2 Pear Danish (Tray)

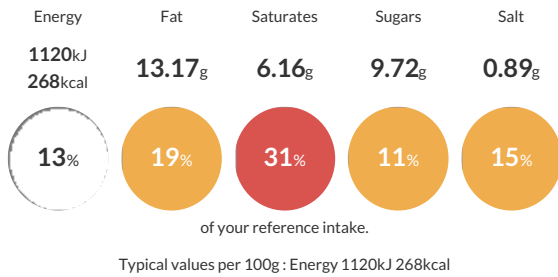
Short Product Name:
 PP 2 Pear Danish (Tray)

PP 2 Pear Danish (Tray)

Traded Unit GTIN: - Internal GTIN: **5060697740226** Supplier: **The Artisan Bakery** Suppliers Product Code: **P7704**

Reference Intake

Each 100g portion contains:



Nutritional Information

| Typical Values | Per 100g |
|--------------------|-------------------|
| Energy | 1120kJ 268kCal |
| Carbohydrates | 31.94g |
| of which sugars | 9.72g |
| Fat | 13.17g |
| of which saturates | 6.16g |
| Fibre | 1.48g |
| Protein | 5.34g |
| Salt | 0.89g |

Allergy Information

Key: **Contains** **May Contain**



Dietary Information

Key: **Suitable for**



Allergen Statement

Manufactured in a factory that handles Sesame, Rye, Barley, Oats, Spelt, Soya, Mustard.

Ingredients

Strong **WHEAT** Flour (32%) [**WHEAT** Flour, Calcium Carbonate, Niacin, Iron, Thiamine], Pears (21%) [Pear Halves, Water, Sugar], Pastry Margarine (13%) [Vegetable Oils and Fats (Palm, Rapeseed, Sunflower, in varying proportions); Water; Salt; Emulsifiers (Lecithins, E471); Acid (Citric Acid); Flavouring; Colour (Carotenes)], Water, Pasteurised Whole **MILK**, Caster Sugar, Glaze [Water, Vegetable Proteins, Sunflower Oil, Dextrose, Maltodextrines, Maize Starch], Glaze [Sugar, Water, Glucose-Fructose Syrup, Gelling Agent (Pectin), Acid (Citric Acid), Trisodium Citrate], Fresh Yeast, Unsalted Butter (**MILK**), **ALMOND (NUTS)** Powder, Free Range Pasteurised Whole **EGG**, Salt, Plain **WHEAT** Flour [**WHEAT** Flour, Calcium Carbonate, Niacin, Iron, Thiamine], Improver [**WHEAT** Flour with added Calcium, Iron, Niacin, Thiamin, Rapeseed Oil, Flour Treatment Agent (E300)].