

Supplier's Product Code :
Product Added :
Last Updated by Supplier :
erudus id :

P7706
12 April 2022
17 April 2023
2578badf6c024c548309fbbdd33b92b8



The information on the Erudus System has been supplied by the manufacturers of the products and, whilst the owners of the Erudus System take steps to ensure the information is regularly updated, they give no warranty and no guarantee that the information is accurate. Product information and ingredients may change, please always read product labels carefully in addition to using the information provided by Erudus One.

We do not accept liability for any inaccuracies or incorrect information contained on this site. Please visit <http://www.erudus.com/terms-and-conditions> for full terms and conditions.

PP 2 Vanilla Danish (Tray)

Short Product Name:

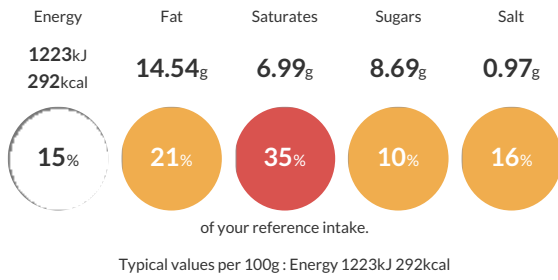
PP 2 Vanilla Danish (Tray)

PP 2 Vanilla Danish (Tray)

Traded Unit GTIN: - Internal GTIN: 5060697740240 Supplier: The Artisan Bakery Suppliers Product Code: P7706

Reference Intake

Each 100g portion contains:



Nutritional Information

Typical Values	Per 100g
Energy	1223kJ 292kCal
Carbohydrates	33.66g
of which sugars	8.69g
Fat	14.54g
of which saturates	6.99g
Fibre	1.25g
Protein	6.3g
Salt	0.97g

Allergy Information

Key: Contains May Contain



Dietary Information

Key: Suitable for



Allergen Statement

Manufactured in a factory that handles Nuts, Sesame, Rye, Barley, Oats, Spelt, Soya, Mustard.

Ingredients

Strong **WHEAT** Flour (78%) [**WHEAT** Flour, Calcium Carbonate, Niacin, Iron, Thiamine], Vanilla Pastry Cream (40%), Pastry Margarine (32%) [Vegetable Oils and Fats (Palm, Rapeseed, Sunflower, in varying proportions); Water; Salt; Emulsifiers (Lecithins, E471); Acid (Citric Acid); Flavouring; Colour (Carotenes)], Water, Pasteurised Whole **MILK**, Glaze [Water, Vegetable Proteins, Sunflower Oil, Dextrose, Maltodextrins, Maize Starch], Caster Sugar, Glaze [Sugar, Water, Glucose-Fructose Syrup, Gelling Agent (Pectin), Acid (Citric Acid), Trisodium Citrate], Fresh Yeast, Salt, Improver [**WHEAT** Flour with added Calcium, Iron, Niacin, Thiamin, Rapeseed Oil, Flour Treatment Agent (E300)]; Vanilla Pastry Cream contains: Pasteurised Whole **MILK**, Pasteurised Free Range **EGG** Yolk, Caster Sugar, Maize Starch, Unsalted Butter (**MILK**), Vanilla Flavour [Water, Propylene Glycol, Flavouring Substances, Caramel].