

Supplier's Product Code :
 Product Added :
 Last Updated by Supplier :
 erudus id :

P7716
 12 April 2022
 13 April 2023
 ff9cbb90b9e4436ea89f79fe68d20517



The information on the Erudus System has been supplied by the manufacturers of the products and, whilst the owners of the Erudus System take steps to ensure the information is regularly updated, they give no warranty and no guarantee that the information is accurate. Product information and ingredients may change, please always read product labels carefully in addition to using the information provided by Erudus One.

We do not accept liability for any inaccuracies or incorrect information contained on this site. Please visit <http://www.erudus.com/terms-and-conditions> for full terms and conditions.

PP 2 Plant Based Pain au Chocolat (Tray)

Short Product Name:

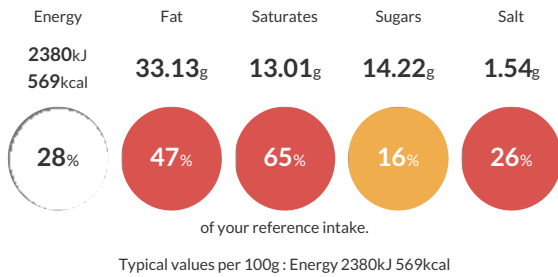
PP 2 Plant Based Pain au Chocolat (Tray)

Pack of 2 Plant Based Pain au Chocolat. Rectangle, crisp golden brown outer layer, soft moist laminations with two chocolate strips. Light with the taste of bitter chocolate. Tray and film are home compostable.

Traded Unit GTIN: - Internal GTIN: 5060697740745 Supplier: The Artisan Bakery Suppliers Product Code: P7716

Reference Intake

Each 100g portion contains:



Nutritional Information

| Typical Values | Per 100g |
|--------------------|-------------------|
| Energy | 2380kJ 569kCal |
| Carbohydrates | 56.67g |
| of which sugars | 14.22g |
| Fat | 33.13g |
| of which saturates | 13.01g |
| Fibre | 2.18g |
| Protein | 9.86g |
| Salt | 1.54g |

Allergy Information

Key: Contains May Contain



Dietary Information

Key: Suitable for



Allergen Statement

Manufactured in a factory that handles Nuts, Sesame, Milk, Egg, Rye, Barley, Oats, Spelt, Mustard. 'Suitable for Vegans' is based on ingredients list and does not take into account possible cross contamination during production.

Ingredients

Strong WHEAT Flour (63%) [WHEAT Flour, Calcium Carbonate, Niacin, Iron, Thiamine], Pastry Margarine (27%) [Vegetable Oils and Fats (Palm, Rapeseed, Sunflower, in varying proportions); Water; Salt; Emulsifiers (Lecithins, E471); Acid (Citric Acid); Flavouring; Colour (Carotenes)], Water, Dark Chocolate Sticks [Sugar, Cocoa Mass, Cocoa Butter, Emulsifier: SOYA Lecithin, Natural Vanilla Flavour], SOYA Drink [Water, Hulled SOYA Beans], Caster Sugar, Rapeseed Oil, Glaze [Water, Vegetable Proteins, Sunflower Oil, Dextrose, Maltodextrines, Maize Starch], Fresh Yeast, Salt, Improver [WHEAT Flour with added Calcium, Iron, Niacin, Thiamin, Rapeseed Oil, Flour Treatment Agent (E300)].