

Supplier's Product Code :
 Product Added :
 Last Updated by Supplier :
 erudus id :

P7703
 11 April 2022
 17 April 2023
 3ab7d409e6754384b75e40c1e932b59d



The information on the **Erudus System** has been supplied by the manufacturers of the products and, whilst the owners of the Erudus System take steps to ensure the information is regularly updated, they give no warranty and no guarantee that the information is accurate. Product information and ingredients may change, please always read product labels carefully in addition to using the information provided by Erudus One.

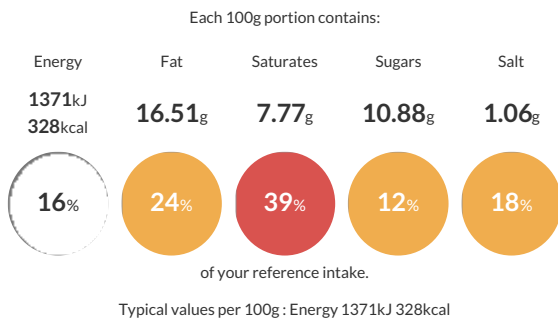
We do not accept liability for any inaccuracies or incorrect information contained on this site. Please visit <http://www.erudus.com/terms-and-conditions> for full terms and conditions.

PP 2 Copenhagen Danish (Tray)

Short Product Name:
 PP 2 Copenhagen Danish (Tray)
 PP 2 Copenhagen Danish (Tray)

Traded Unit GTIN: - Internal GTIN: **5060697740219** Supplier: **The Artisan Bakery** Suppliers Product Code: **P7703**

Reference Intake



Nutritional Information

Typical Values	Per 100g
Energy	1371kJ 328kCal
Carbohydrates	37.8g
of which sugars	10.88g
Fat	16.51g
of which saturates	7.77g
Fibre	1.73g
Protein	6.56g
Salt	1.06g

Allergy Information

Key: **Contains** **May Contain**



Dietary Information

Key: **Suitable for**



Allergen Statement

Manufactured in a factory that handles Sesame, Rye, Barley, Oats, Spelt, Soya, Mustard.

Ingredients

Strong **WHEAT** Flour (38%) [**WHEAT** Flour, Calcium Carbonate, Niacin, Iron, Thiamine], Pastry Margarine (16%) [Vegetable Oils and Fats (Palm, Rapeseed, Sunflower, in varying proportions); Water; Salt; Emulsifiers (Lecithins, E471); Acid (Citric Acid); Flavouring; Colour (Carotenes)], Water, Pasteurised Whole **MILK**, Caster Sugar, Glaze [Water, Vegetable Proteins, Sunflower Oil, Dextrose, Maltodextrines, Maize Starch], Glaze [Sugar, Water, Glucose-Fructose Syrup, Gelling Agent (Pectin), Acid (Citric Acid), Trisodium Citrate], Unsalted Butter (**MILK**), Dried Apricot (2%) [Apricot, Rice Flour], **ALMOND (NUTS)** Powder, Free Range Pasteurised Whole **EGG**, Sultanas (2%) [Sultanas, Cotton Seed Oil], Fresh Yeast, Salt, Plain **WHEAT** Flour [**WHEAT** Flour, Calcium Carbonate, Niacin, Iron, Thiamine], Improver [**WHEAT** Flour with added Calcium, Iron, Niacin, Thiamin, Rapeseed Oil, Flour Treatment Agent (E300)].