

Supplier's Product Code :
 Product Added :
 Last Updated by Supplier :
 erudus id :

P7714
 12 April 2022
 12 April 2022
 2e4ecfdee413499883edbccc49449c13



The information on the **Erudus System** has been supplied by the manufacturers of the products and, whilst the owners of the Erudus System take steps to ensure the information is regularly updated, they give no warranty and no guarantee that the information is accurate. Product information and ingredients may change, please always read product labels carefully in addition to using the information provided by Erudus One.

We do not accept liability for any inaccuracies or incorrect information contained on this site. Please visit <http://www.erudus.com/terms-and-conditions> for full terms and conditions.

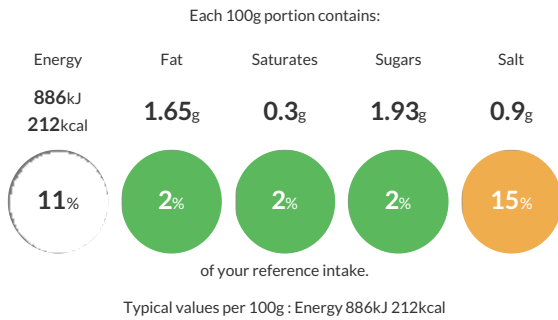
PP 4 Soft Bun

Short Product Name:
 PP 4 Soft Bun

PP 4 Soft Bun

Traded Unit GTIN: - Internal GTIN: 5060697740325 Supplier: The Artisan Bakery Suppliers Product Code: P7714

Reference Intake



Nutritional Information

Typical Values	Per 100g
Energy	886kJ 212kCal
Carbohydrates	41.17g
of which sugars	1.93g
Fat	1.65g
of which saturates	0.3g
Fibre	1.98g
Protein	7.34g
Salt	0.9g

Allergy Information

Key: **Contains** **May Contain**

Contains Cereal/Gluten	May Contain Milk	May Contain Eggs	Does Not Contain Peanuts	May Contain Nuts	Does Not Contain Crustaceans	May Contain Mustard
Does Not Contain Fish	Does Not Contain Lupin	May Contain Sesame	Does Not Contain Celery	May Contain Soya	Does Not Contain Molluscs	Does Not Contain Sulphur Dioxide

Dietary Information

Key: **Suitable for**

Suitable for Vegetarian	Suitable for Vegan	May not be suitable for Kosher	May not be suitable for Halal	May not be suitable for Coeliac
-------------------------	--------------------	--------------------------------	-------------------------------	---------------------------------

Allergen Statement

Manufactured in a factory that handles Nuts, Sesame, Milk, Eggs, Rye, Barley, Oats, Spelt, Mustard. 'Suitable for Vegans' is based on ingredients list and does not take into account possible cross contamination during production.

Ingredients

WHEAT Flour (with added Calcium, Iron, Niacin, Thiamin) (57%), Water, Glaze [Water, Vegetable Proteins, Sunflower Oil, Dextrose, Maltodextrines, Maize Starch], Improver [WHEAT Flour (with added Calcium Carbonate, Niacin, Iron, Thiamine), Dextrose, Salt, Emulsifiers (E472e; E481; E471), Rapeseed Oil, Flour Treatment Agents (E300; E920)], Fresh Yeast.