

Changed Feb 26, 2024 14:47

Reviewed Feb 26, 2024 14:47

Erudus ID 719976d15d5040bdaf0f3b2eb3dd0c4d

Version 1.0

PP 2 120g Ciabatta Slipper (Tray)

Pp 2 120g Ciabatta Slipper (tray) 1x240g

PRODUCT DESCRIPTION

PP 2 120g Ciabatta Slipper (Tray)

Brand	The Artisan Bakery
Manufacturer Product Code	D2101A-PP2
Product Type	Food
Product Category	Artisan/Speciality Bread
Storage Type	Ambient
Erudus ID	719976d15d5040bdaf0f3b2eb3dd0c4d
Specification Type	Bakery Products
Inner Component GTIN	5060697742893



INGREDIENTS

Ingredient Declaration

Flour [**WHEAT** Flour, Calcium, Iron, Niacin, Thiamin], Water, Extra Virgin Olive Oil, Salt, Fresh Yeast

ALLERGENS

Product Contains:

Celery/Celeriac	No	Mustard	May Contain
Cereals Containing Gluten	Yes	Nuts (Tree)	May Contain
Barley	May Contain	Almond nuts	May Contain
Oats	May Contain	Brazil nuts	No
Rye	May Contain	Cashew nuts	No
Wheat (including Spelt and Khorasan)	Yes	Hazelnuts	May Contain
Crustacea	No	Macadamia (Queensland) nuts	No
Eggs	May Contain	Pecan nuts	May Contain
Fish	No	Pistachio nuts	May Contain
Lupin	No	Walnuts	May Contain
Milk	May Contain	Peanuts	No
Molluscs	No	Sesame Seeds	May Contain
		Soybeans	May Contain
		Sulphur Dioxide and Sulphites	No

Risk Source:

Barley (Risk Source)	Factory	Oats (Risk Source)	Factory
Rye (Risk Source)	Factory	Eggs (Risk Source)	Factory
Milk (Risk Source)	Factory	Mustard (Risk Source)	Factory
Tree Nuts (Risk Source)	Factory	Almond nuts (Risk Source)	Factory
Hazelnuts (Risk Source)	Factory	Pecan nuts (Risk Source)	Factory
Pistachio nuts (Risk Source)	Factory	Walnuts (Risk Source)	Factory
Sesame Seeds (Risk Source)	Factory	Soybeans (Risk Source)	Factory

Additional Allergen Information

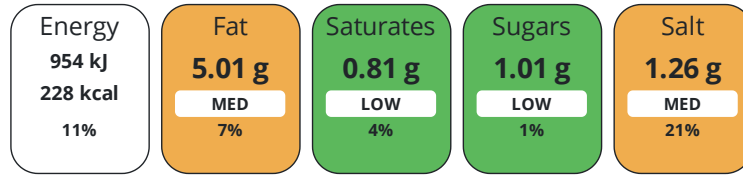
Manufactured in a factory that handles Almonds, Hazelnuts, Walnuts, Pecan Nuts, Pistachios, Sesame, Milk, Eggs, Rye, Barley, Oats, Spelt, Soya, Mustard. 'Suitable for Vegans' is based on ingredients list and does not take into account possible cross contamination during production.

DIET SUITABILITY

Vegan Diet	Suitable for	Vegetarian Diet	Suitable for
Halal Diet	No	Kosher Diet	No

NUTRITIONAL INFORMATION

Each 100g/ml portion contains:



of your reference intake.

Typical values per 100g/ml : Energy 228kcal / 954kJ

Nutrient	per 100g	RI per 100g
Energy (kJ)	954 kJ	11%
Energy (kcal)	228 kcal	11%
Fat	5.01 g	7%
of which Saturates	0.81 g	4%
Carbohydrate	39.37 g	15%
of which Sugars	1.01 g	1%
Fibre	2.56 g	
Protein	7.26 g	15%
Salt	1.26 g	21%

Source of Nutritional Information Calculation based on known values of ingredients

HANDLING & STORAGE INFORMATION

Directions For Use

Ready to eat

Storage Instructions

Store in a cool dry place

ORIGIN

Product Country of Origin/Place of United Kingdom

Provenance

CONTACT
INFORMATION

Address

The Artisan Bakery
160 Dukes Road
London
W3 0SL
United Kingdom

P: (Phone) 02089615931

Technical Contact

Cristiano Sudiro
Operations Manager
technical@theartisanbakery.com

P: (Phone) 02089615931

Commercial Contact

Maya El-Labban
General Manager
orders@theartisanbakery.com

P: (Phone) 02089615931

The information on the [Erudus System](#) has been supplied by the manufacturers of the products and, whilst the owners of the Erudus System take steps to ensure the information is regularly updated, they give no warranty and no guarantee that the information is accurate. Product information and ingredients may change, please always read product labels carefully in addition to using the information provided by Erudus.

We do not accept liability for any inaccuracies or incorrect information contained on this site.
Please visit <http://www.erudus.com/terms-and-conditions> for full terms and conditions.