

Supplier's Product Code :
 Product Added :
 Last Updated by Supplier :
 erudus id :

P7451
 11 April 2022
 11 April 2022
 2d638ef68c4c425f835e2cd78864e9a0



The information on the Erudus System has been supplied by the manufacturers of the products and, whilst the owners of the Erudus System take steps to ensure the information is regularly updated, they give no warranty and no guarantee that the information is accurate. Product information and ingredients may change, please always read product labels carefully in addition to using the information provided by Erudus One.

We do not accept liability for any inaccuracies or incorrect information contained on this site. Please visit <http://www.erudus.com/terms-and-conditions> for full terms and conditions.

PP Plant Based Blueberry Muffin (Tray)

Short Product Name:

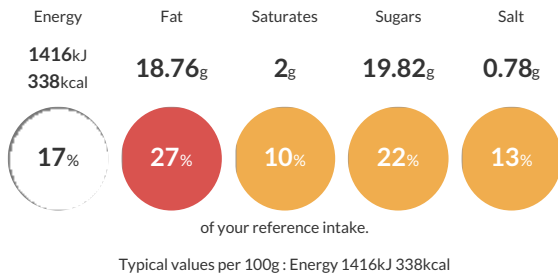
PP Plant Based Blueberry Muffin (Tray)

PP Plant Based Blueberry Muffin (Tray)

Traded Unit GTIN: - Internal GTIN: 5060697740714 Supplier: The Artisan Bakery Suppliers Product Code: P7451

Reference Intake

Each 100g portion contains:



Nutritional Information

Typical Values	Per 100g
Energy	1416kJ 338kCal
Carbohydrates	35.85g
of which sugars	19.82g
Fat	18.76g
of which saturates	2g
Fibre	2.22g
Protein	5.44g
Salt	0.78g

Allergy Information

Key: Contains May Contain



Dietary Information

Key: Suitable for



Allergen Statement

Manufactured in a factory that handles Sesame, Milk, Eggs, Rye, Barley, Oats, Spelt, Mustard. 'Suitable for Vegans' is based on ingredients list and does not take into account possible cross contamination during production.

Ingredients

Vegan Cake Mix [Sugar, WHEAT Flour, Wheat Starch, SOYA Protein Concentrate, Raising Agents (E 450, E 500), Dextrose, Salt, Thickener E 415, Natural Vanilla Flavouring, Spice], Water, Rapeseed Oil, Raspberries, Blueberry (8%), WHEAT Flour (with added Calcium, Iron, Niacin, Thiamin), Caster Sugar, Pastry Margarine (2%) [Vegetable Oils and Fats (RSPO Certified Palm, Rapeseed), Water, Salt, Lemon Juice Concentrate], ALMOND (NUTS) Powder, Icing Sugar [Sugar, Anti Caking Agent (E341)].